

STANDARD:
FIBERGLASS
WOOL

High performance
2"X6" WALL WITH 5 1/2"
FIBERGLASS WOOL INSULATION

32,6 R-TOTAL
INSULATION
FACTOR

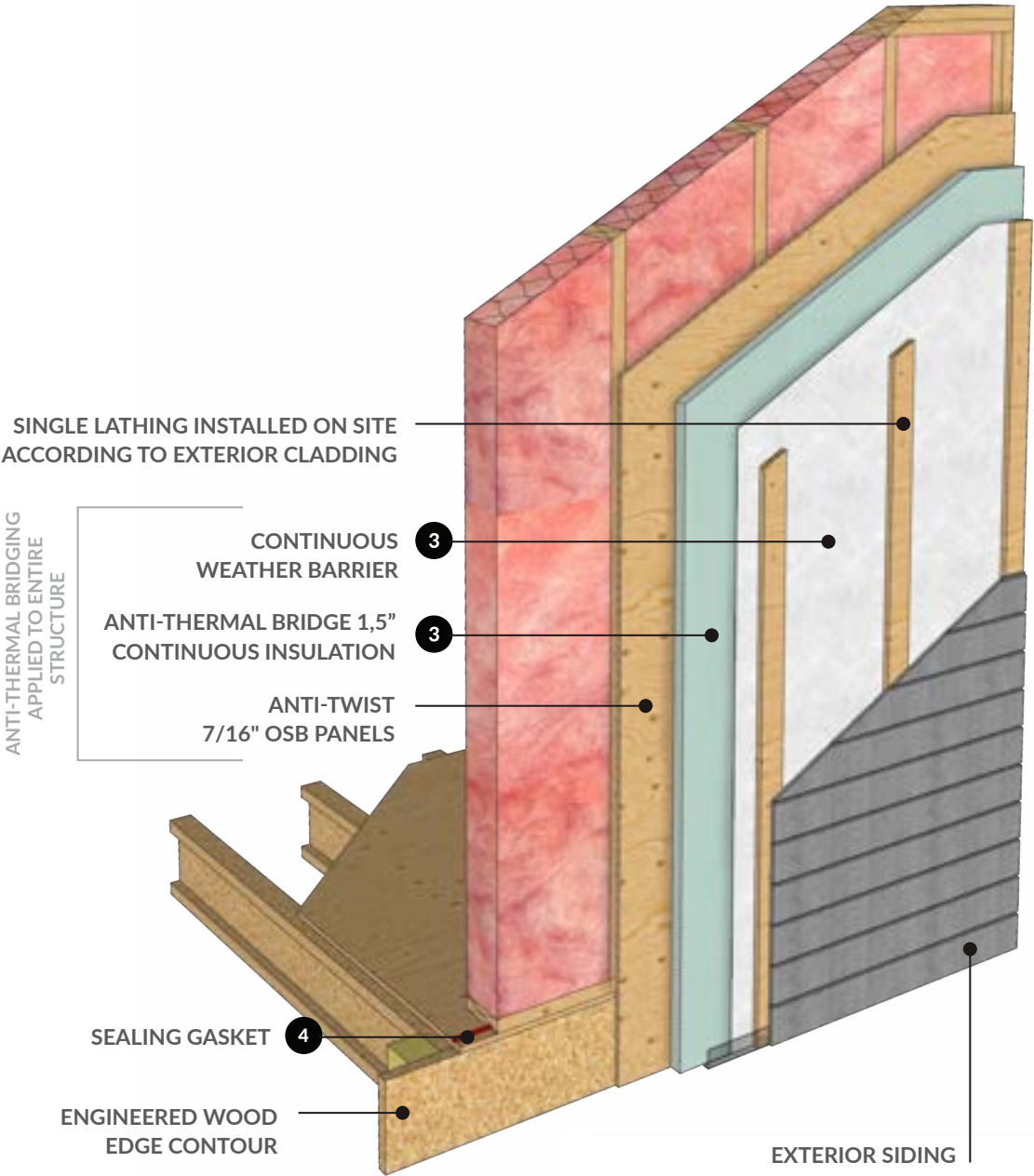
Optional: Very high performance
2"X8" WALL WITH 7 1/2"
FIBERGLASS WOOL INSULATION

38,7 R-TOTAL
INSULATION
FACTOR

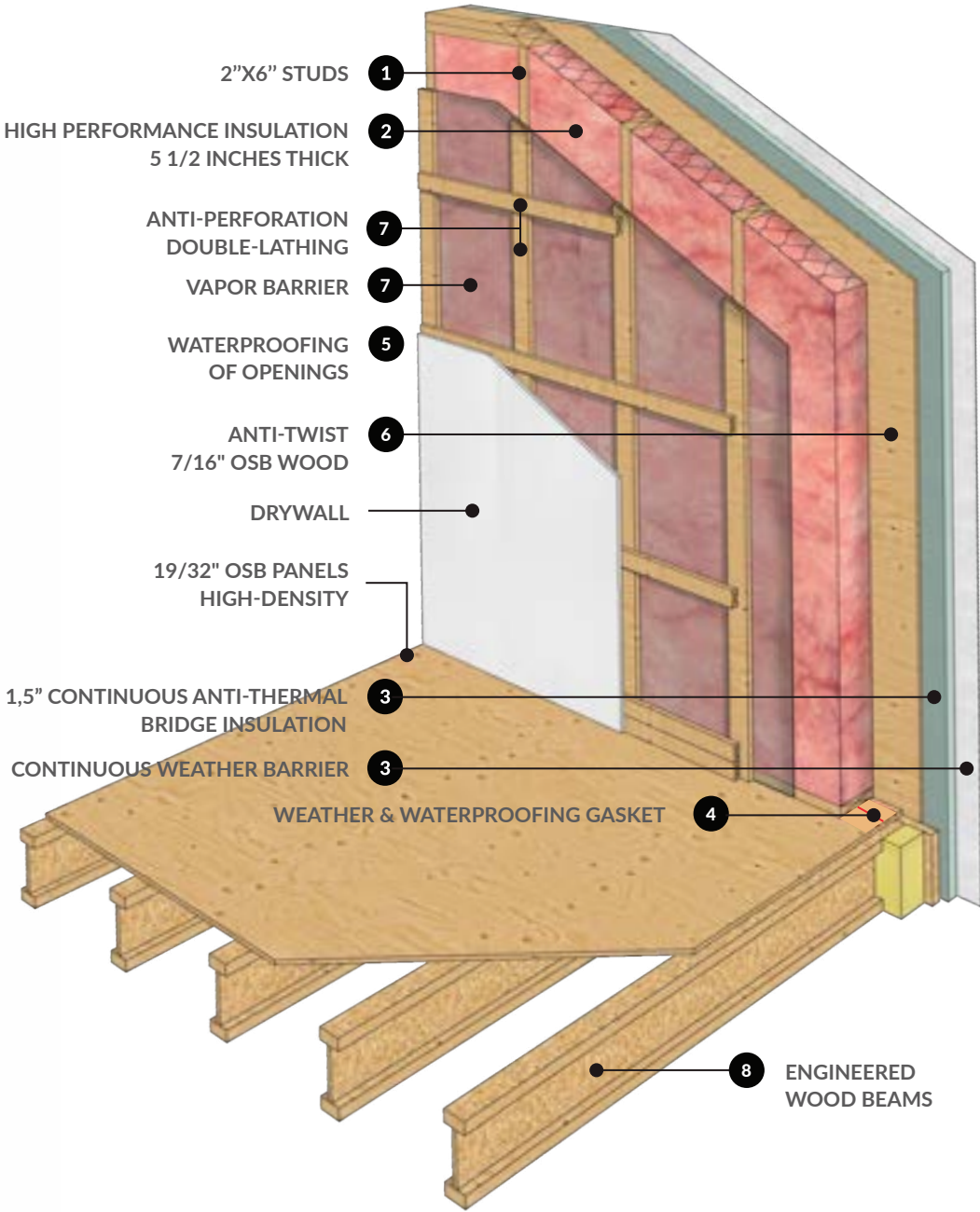
OPTION:
ROCK WOOL



LAPRISE WALL
MORE EFFICIENT AND ECOLOGICAL THAN EVER



EXTERIOR VIEW



INTERIOR VIEW



1

HIGH PRECISION PRE-ENGINEERED WALL SYSTEM

Factory-assembled walls in an optimized, automated and controlled environment which ensures superior quality, strength and precision. The advanced level of prefabrication allows for greater speed and efficiency during site installation.

STANDARD: Studs in 2"x6" positioned at 16" c-c.

OPTIONAL: Studs in 2"x 8" positioned at 16" c-c.

2

HIGH PERFORMANCE INSULATION

5 1/2" fiberglass wool insulation factory-installed in the walls provides thermal comfort and significant energy savings. Factory-installed polythene protection to safeguard insulating wool.

STANDARD: Fiberglass wool 5 1/2 inch thick

OPTIONAL: Fiberglass 7 1/2 inch thick

3

**ANTI-THERMAL BRIDGE
EXTERIOR CONTINUOUS INSULATION**

Rigid 1.5" continuous anti-thermal bridge and weather barrier insulation factory-installed covering the entire surface of the exterior walls (including the junction between the wall and the top plate and the floor junction) for maximum airtightness and waterproofing.

4

SEALED JOINTS

High-performance acoustic sealant under wall bottom plate as well as at the floor/ceiling junction to prevent air and humidity infiltration with a view to maximize waterproofing.

5

SEALING OF ALL OPENINGS

Factory-installed waterproofing membrane to seal the perimeter of the windows to further protect against bad weather and infiltrations.

6

**SOLID ANTI-TORSION
OSB PANELS**

Continuous 7/16" OSB wood covering the entire surface of the exterior walls as well as the junction between the wall and the top plate ensuring structural stability and resistance as well as optimal bracing.

7

DOUBLE LATHING AND VAPOR BARRIER

Continuous vapor barrier onto which a double-lathing system is installed to facilitate the passage of electrical wires, which helps to considerably reduce the risk of perforation of the vapor barrier.

8

I-BEAMS

Engineered wood I-joists stand out for their durability, increased strength and the reliability in terms of structural stability.

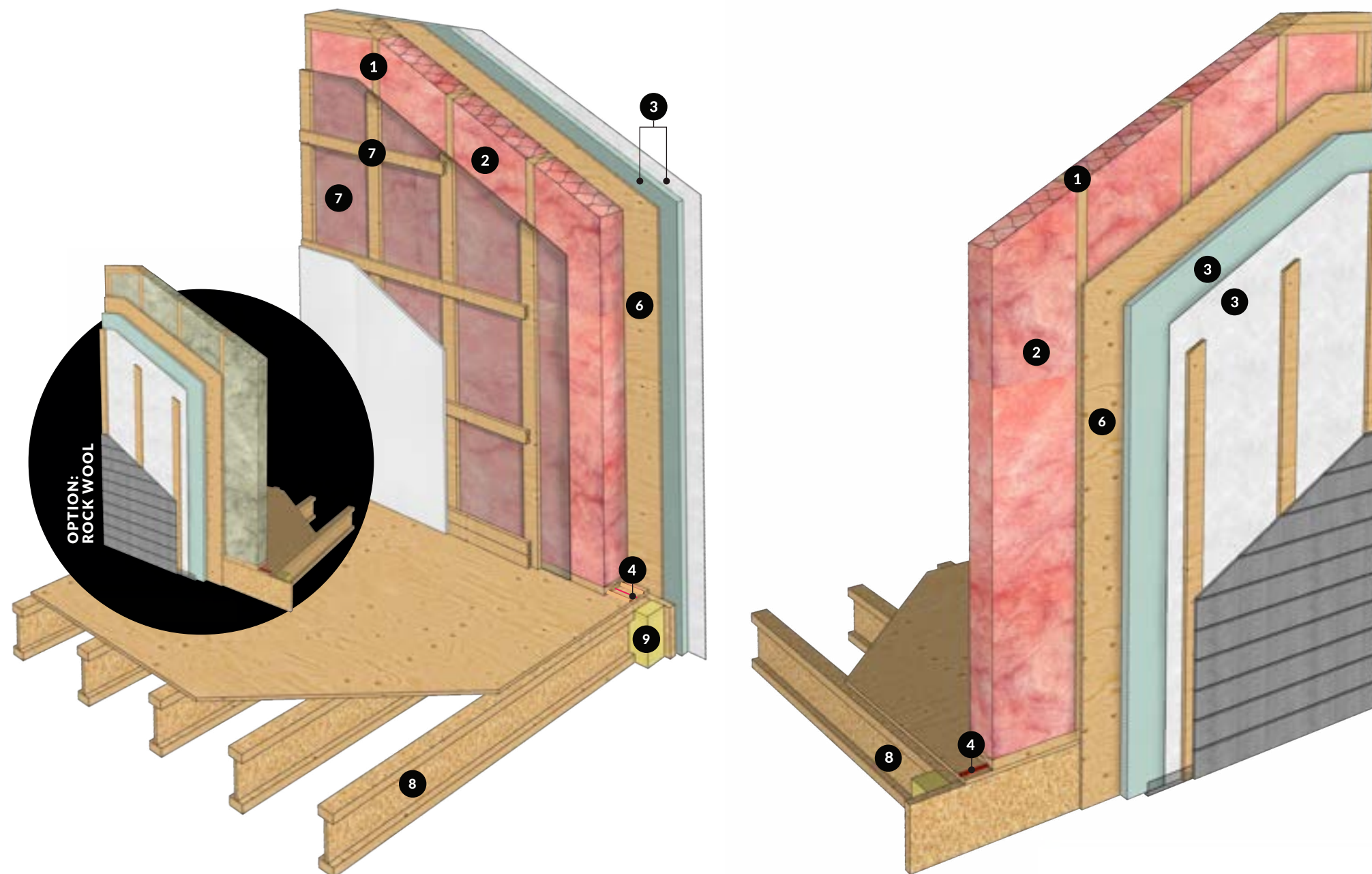
9

INSULATION OF THE EDGE BELT

Edge belt insulation, sprayed urethane.

LAPRISE WALL

MORE EFFICIENT AND ECOLOGICAL THAN EVER



STANDARD: FIBERGLASS WOOL

High performance

**2"X6" WALL WITH 5 1/2"
FIBERGLASS WOOL INSULATION**

32,6

R-TOTAL
INSULATION
FACTOR

Option: Very high performance

**2"X8" WALL WITH 7 1/2"
FIBERGLASS WOOL INSULATION**

38,7

R-TOTAL
INSULATION
FACTOR

